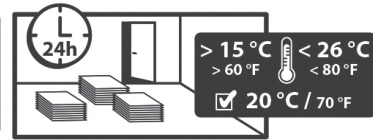
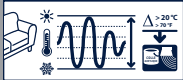


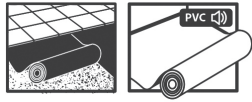
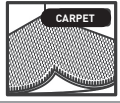


Tiles must be taken out of their boxes at least 24 hours before installation and stored in the room in which they are going to be laid. Examine the materials prior to installation to ensure that there are no visible defects. If such defects exist, please notify GERFLOR and do not begin installation without its prior approval.



For any information on product properties and usages, please refer to its technical datasheet: [www.gerflor.com](http://www.gerflor.com)

## 1. AREAS OF APPLICATION

INSTALLATION		Full bonding with a tackifier.
LAYING TEMPERATURE		+ 15°C < T < + 26°C in temperature-regulated premise
USAGE TEMPERATURE		Acceptable temperature range after installation: 20°C (e.g.: + 10° to + 30°C)
DIRECT SOLAR RADIATION (SUNNY AREA OF BAY WINDOWS, SKYLIGHT, SKYDOME, ETC.)		<b>Laying is allowed as long as the ambient temperature is regulated. In order to prevent the floor temperature from reaching excessive values (60 °C or above), direct sunlight on the floor should be obscured by curtains, blinds or other suitable protection. Otherwise, maintain the covering with a suitable adhesive, such as two-part polyurethane (PU) adhesive or hybrid adhesive (please contact the adhesive manufacturers)</b>
VERANDA		<b>Prohibited</b>
<b>SUBSTRATES</b>		
TILED SUBSTRATE		If the substrate requirements are met and more than 90% of the room's surface is in a good condition, remove the defective tiles, fill the gaps with levelling compound, and then lay the Saga <sup>2</sup> tiles after the substrate has dried. Otherwise, the entire flooring will have to be taken up and the substrate prepared from scratch. The tiles must not have any uneven areas and the grouting joints must not be > 5 mm wide and 1 mm deep. Otherwise, fill them with a grouting product or levelling compound over the entire surface, so that the grouting joints are not visible (no telegraphing).
CONCRETE FLOOR, PAINTED CONCRETE, LEVELLING CONCRETE, LIQUID CEMENT SCREEDS, CALCIUM SULPHATE-BASED, ANHYDRITE SCREEDS (SEE § 2.2)		If necessary, apply a levelling compound to eliminate any surface irregularities. Sand, remove dust.
PVC TILES AND COMPACT ROLLS COMPACT LINOLEUM		If the substrate requirements are met and more than 90% of the room's surface is in a good condition, remove the defective tiles, fill the gaps with levelling compound, and then lay the Saga <sup>2</sup> tiles after the substrate has dried. Otherwise, the entire flooring will have to be taken up and the substrate prepared from scratch.
UNDERLAYER / SOUNDPROOF PVC ROLLS		<b>Prohibited</b>
TEXTILE FLOORING (CARPET)		<b>Prohibited</b>
RESIN		There must be no defects in the resin, otherwise the entire flooring will have to be taken up and the substrate prepared from scratch.
WOOD-BASED PANEL FLOORING ON JOISTS OR ON BATTENS		Suitable after treatment of any possible defects on the substrate (unevenness, open joints between panels...)
GLUED PARQUET		<b>Not Suitable</b>
PARQUET NAILED ONTO BATTENS SPACED NO MORE THAN 0.60 M APART, WITH VENTILATION OF THE INSIDE FACING		Treat any possible defects on the substrate (unevenness, open joints between planks ...) then apply a fiber-reinforced levelling compound (directly or on lining boards)
FLOATING PARQUET OR PANEL		<b>Not Suitable</b>
LAMINATED FLOOR		<b>Not Suitable</b>
OSB BOARD		Apply a fiber-reinforced levelling compound after treatment of any possible defects on the substrate (unevenness, open joints between panels...)
<b>UNDERFLOOR HEATING</b>		
UNDERFLOOR HEATING WITH CIRCULATING HOT WATER AT MAXIMUM 28°		Suitable
RADIANT ELECTRIC UNDERFLOOR HEATING THE REGULATIONS REQUIRE ≤ 0.15 M² X° KELVIN / WATT		Suitable
LOW TEMPERATURE WATER REVERSIBLE UNDERFLOOR HEATING		Suitable
<b>If the substrate is not in this list: please contact us.</b>		

**IMPORTANT:** The information in this document is valid from: 20/01/2022 and is subject to change without prior notice. We are continuously making technical improvements to our products; before starting any work, our customers should check with us that this document is still in force.

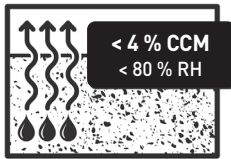
## 2. SUBSTRATE PREPARATION

### 2.1. SUBSTRATE REQUIREMENTS

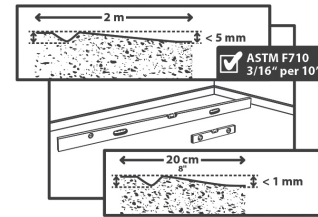
The flooring must be laid on a flat, clean, sound, dry and solid substrate.



The moisture content must not exceed 4% according to the Carbide Control Method in case of cement-based substrate and 0.5% CCM for anhydrite-based (calcium sulphate) substrate.

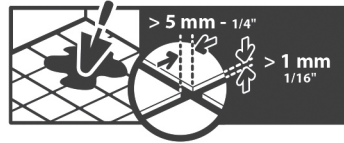


- The evenness must be < 5 mm under a 2-metre straight edge.
- The substrate must not have any uneven areas > 1 mm every 20 cm
- The substrate should be smooth and dust-free.



#### 2.1.1. Tiled substrate

- The dividing joints or grouting joints must not have a gap > 5 mm.
- The tiles must have no unevenness.



### 2.2. PREPARATORY WORK ON NEW CONCRETE SUBSTRATES

The surfaces should be prepared with care so as to remove any soiling, laitance, treatment products or any other foreign body. If the substrate does not meet the requirements, a substrate preparation must be carried out:

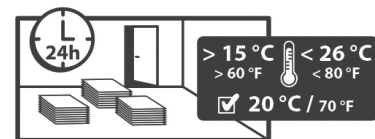
- On substrate with moisture content < 4%, 80 % RH: Use a self levelling compound in accordance with your local standards.
- On substrate with moisture content between 4 and 7%, 92 % RH: we recommend applying a rising damp treatment before you apply a levelling compound.
- Localised patching: A suitable mortar may be used in localised areas which do not meet the requirements in terms of evenness and surface finish.
- Crack treatment: Treat cracks before applying a levelling compound if the unevenness is > 1 mm or there is a gap of > 1 mm.
- Joint treatment:
  - Contraction joints: treat joints before applying a levelling compound if the unevenness is > 1 mm or there is a gap of > 5 mm.
  - Construction joints: treat joints before applying a levelling compound if the unevenness is > 1 mm or there is a gap of > 1 mm

## 3. INSTALLATION

### 3.1. LAYING CONDITIONS

The tiles must be stored in the room in which they are going to be laid for at least 24 hours before installation. To avoid major colour differences, mix the tiles from several different boxes from the same series.

The room temperature during installation must be between 15 and 26°C.

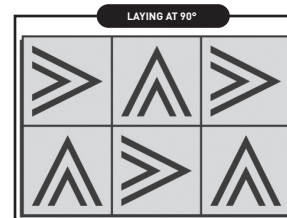


### 3.2. LAYING THE FLOOR COVERING

IMPORTANT

Laying direction: Laying at 90°

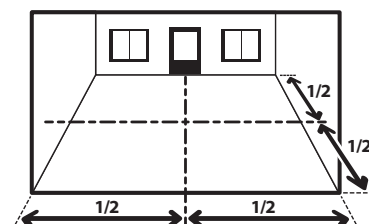
The lines marked on the backing of the tiles help you observe the laying direction.



### 3.3. MARKING OUT THE AXIS

Mark out the starting axes for laying the tiles following the requirements as illustrated opposite:

- Centre a row of tiles on the main axes.
- Check that the cut tiles around the edges will be larger than a half-tile.



### 3.4. TRIMMING

The floor covering is simply trim (cut) around the room edges; the edge clearance can be covered with wooden skirting (natural, to be varnished or painted) or plastic skirting.

In rooms frequently exposed to water (e.g. bathrooms), we recommend to fill the edge clearance with an MS-Polymer mastic before installing the skirting.

### 3.5. ADHESIVE

#### 3.5.1 Tackifier for Saga<sup>2</sup> tiles

MANUFACTURER	SIKA-CEGECOL	BOSTIK	HB FULLER	UZIN	MAPEI	PAREXGROUP
ADHESIVE	CG 100 DPA	FIX A760 TECH	TEC™ 542	U2100	ULTRABOND ECO-FIX	930 LANKOKRYL FIX

For any other adhesive, please consult us.

Depending on the substrate's nature and porosity, possibly apply a primer (refer to manufacturer recommendation).

For the application, always refer to the technical datasheet of primer and adhesive used.

#### Recommendations for application:

- To avoid a permanent bonding, it is essential to allow a sufficient waiting time for the adhesive. The waiting time depends on the temperature, the humidity level, the substrate's porosity and the amount of tackifier used (refer to the datasheet).

#### Gluing in front of sunny area (bay windows)

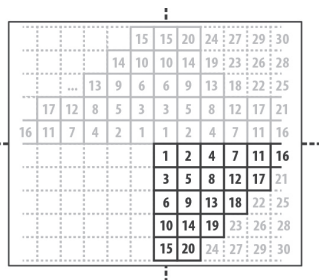
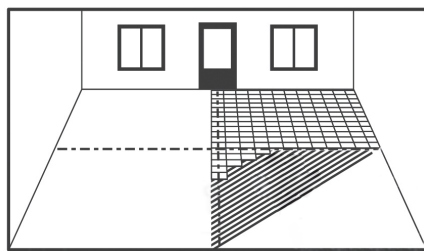
In order to prevent the floor temperature from reaching excessive values (60°C or above), direct sunlight on the floor should be obscured by curtains, blinds or other suitable protection. Otherwise, maintain the covering with a suitable adhesive, such as two-part polyurethane (PU) adhesive or hybrid adhesive (please contact the adhesive manufacturers).



	BOSTIK	MANG	SADER	CEGECOL	MAPEI	UZIN	F BALL
Gluing in front of sunny area (bay windows...)		STIX P956 2K PU 2 components		SOL UR PU 2 components	Adesilex G 20 PU 2 components	KR 430 PU 2 components KE68 Hybrid acrylic glue Single component Bonding time up to 15 minutes	F 49 Hybrid acrylic glue (PSA) Pressure Sensitive Adhesive

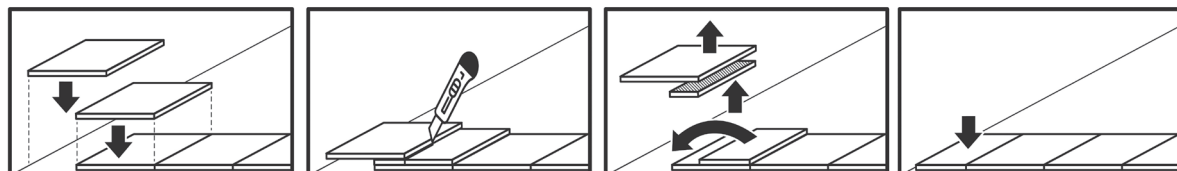
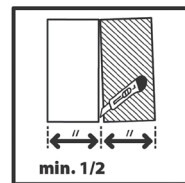
### 3.6. LAYING THE TILES

- After the full waiting time for the adhesive, fit the first tile where the axes intersect.
- Lay the next tiles in a «staircase configuration». (See diagram below)
- Remove any surplus spots of fresh adhesive using a damp cloth while work is in progress.



### 3.7. CUTS

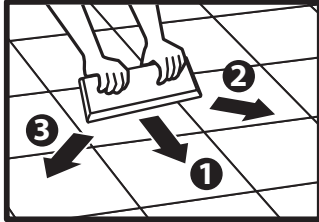
- Position the tile to be cut on the last full tile laid.
- Take a full tile to use as a template.
- Lay it on the tile to be cut, abutting against the partition (or wall).
- Mark the tile to be cut along the edge of the template using a cutter with a straight blade.
- Neatly cut the section of the tile to be laid and fit it in place.



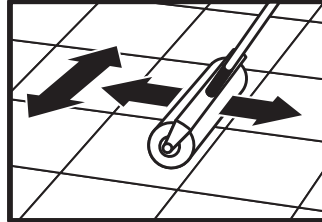
### ■ 3.8. SMOOTHING

Smoothing must be done in two stages:

- Manually, using a smoothing block while work is in progress
- Rolling a smoothing roller over the entire surface once the installation is complete.

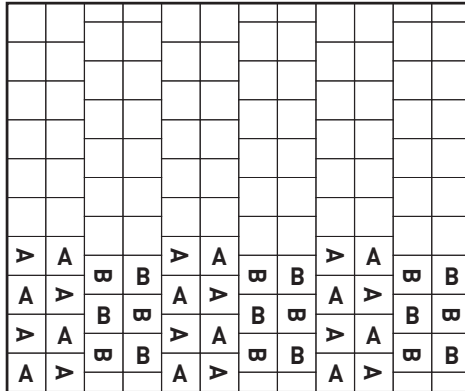


First: manual smoothing

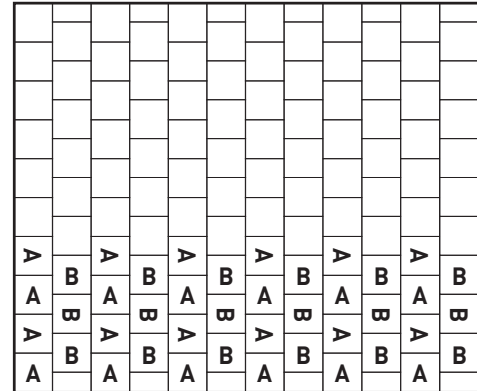


Second: smoothing with a roller

### ■ 3.10. OTHER TYPES OF PERMITTED LAYOUTS



- Laying at 90°
- Colour A and colour B



## 4. TREATMENT OF SPECIAL FEATURES

### ■ 4.1. EXPANSION JOINTS IN SUBSTRATE

- Flush joints: ROMUS profile CJ 20-5 or equivalent may be suitable.
- Joints with overlay profile: The profile is fitted over the floor covering and is secured on one side only.

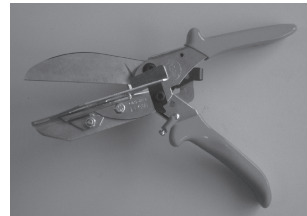
### ■ 4.2. DOOR FRAME BASES AND SPECIAL FEATURES



For cutting around door frame bases, areas which are difficult to access

Mitre shears

Reference:  
Romus: 93407  
Janser: 237 530 000



For cutting around door frame bases, areas which are difficult to access

High leverage gripper shear

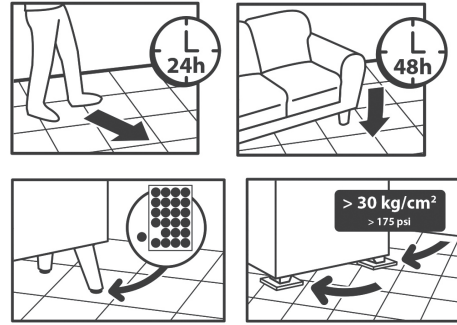
Reference:  
Janser: 262 284 000

### ■ 4.3. CONNECTION TO ADJACENT ROOMS

To join two rooms with SAGA<sup>2</sup> tiles, GERFLOR recommends using a threshold profile with concealed fixings, covering the edges that were left exposed when the flooring was laid. The threshold could be made of wood or metal. Various different thresholds are available from manufacturers such as DINAC and ROMUS among others.

## 5. FIRST USE

- For normal foot traffic, 24 hours after installation.
- Do not install fittings or furniture until 48 hours after laying.
- Ensure that end caps on table and chair feet, castors, etc. are suitable for flexible floor covering (PVC, Linoleum)
- We recommend flat end caps without any pattern and with the surface in full contact with the floor covering (no conical end caps). Do not use rubber end caps on furniture (risk of black stains). Use appropriate protector pads.
- Ensure that office furniture have suitable castors compliant with EN 12529.
- In the case of underfloor heating, wait 7 days before turning the heating back on.



## 6. CARE



The care guides for SAGA<sup>2</sup> are available on the website [www.gerflor.com](http://www.gerflor.com)